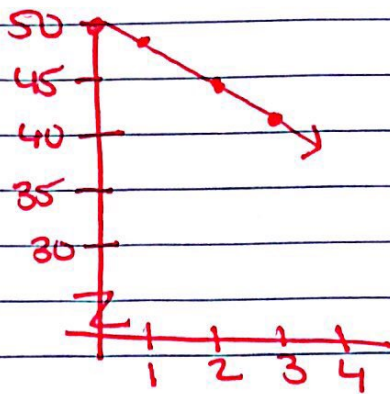


24) a.

# of loads	detergent remaining
0	50
1	47 $\downarrow -3$
2	44 $\downarrow -3$
3	41 $\downarrow -3$



b. Linear

c. Continuous

d. $y = 50 - 3x$

e. $y = 50 - 3(16)$
 $y = 20$ fluid ounces

f. $0 = 50 - 3x$

$3x = 50$

$x = 16.67$

16 loads

g. All real #'s where $x \geq 0$

25)

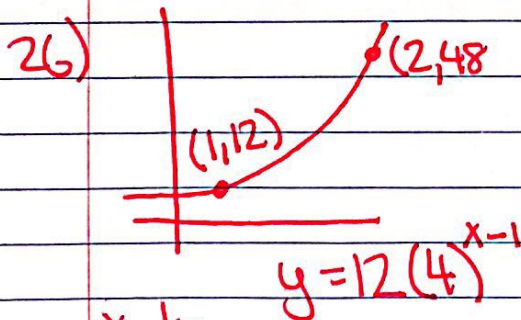
yr	\$
0	22,000
1	$\downarrow .95$
2	

a. $y = 22,000(.95)^x$

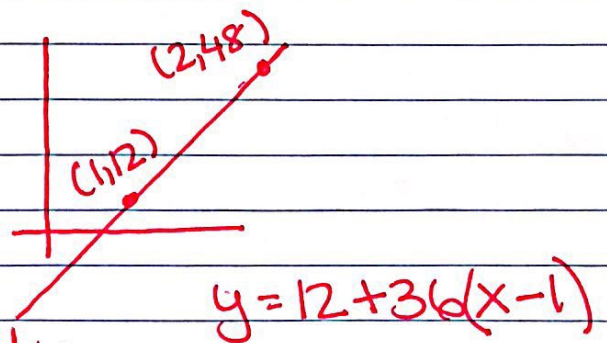
b. $y = 22,000(.95)^7$
 $y = 15,363.42$

\$15,363.42

c. Continuous



x	y
1	12 $\downarrow \cdot 4$
2	48 \downarrow



x	y
1	12 $\downarrow +36$
2	48 \downarrow